

Plastic Backplate Elbow

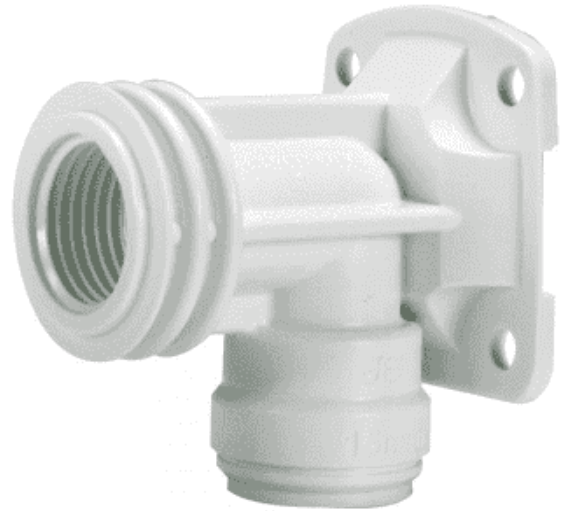
For fast and secure installation of FBSP type 90° connections (with wall plate fixing)

Overview

Speedfit plastic push-fit fitting and wall plate fixing for the quick and secure installation of FBSP type 90° connection. Simply push the fitting onto plastic or copper pipe.

To demount the connection, push the collet towards the body of the fitting and pull the pipe to release. The fitting is quicker and easier to install in confined spaces than traditional methods as it eliminates the need for hot works or tools.

Designed, manufactured and assembled in the UK.



Features & Benefits

- Instant push-fit connection
- Install and demount in seconds without tools
- Safe flame-free installation, with no hot works, glue or flux
- Grip & Seal collet with stainless steel teeth and main O-Ring seal
- Non-toxic, resists corrosion and no scale build-up
- Suitable for use with JG Speedfit PEX and polybutylene barrier pipe (inserts required) and copper pipe
- Suitable for hot, cold and central heating applications

Product code	Description	Size	Bag QTY
15PWB	Plastic Backplate Elbow	15mm x 1/2"	1



50 year guarantee when used with JG Speedfit Layflat PB and PEX Barrier Pipes

Plastic Backplate Elbow

Application	Usual working temperature °C	Maximum working temperature °C	Maximum working pressure, bar
Cold Water (indirect and direct mains)	20	20	12
Central Heating	82	95, short term malfunction at 114	3
Hot Water (including unvented cylinders)	65	95	6

Materials	
Body	Acetal Copolymer (Unfilled), White
O-Ring & Seal	Ethylene Polypropylene Diene Monomer (EPDM)
Collet	Acetal Copolymer (Unfilled), White
Collet Teeth	Stainless Steel 301

Dimensions – All measurements in mm unless stated

